

## Composition:

Name	Icon		Category
Weight		330 g/m <sup>2</sup>	
Composition		100% Polyester	
Abrasion Resistance	EN ISO 12947-1,2	Martindale 45.000T	A
Rubbing Solvents	ISO 105-X12:2001	4-5	A
Rubbing Fastness in Humid State	ISO 105-X12:2001	4-5	A
Pilling Resistance	EN ISO 12945-2:2002	4-5	A
Color Fastness to Light	ISO 105 B02	4-5	B-C
Resistance to Seam Slippage	EN ISO 13936-2	4,0mm WARP; 3,8mm WEFT	A/A
Warp Weft	ISO 13937-3 ISO 13937-3	68,8 N 43,5 N	A/A
Tensile strength	ISO 13934-1	911 N warp / 378 N weft	A/C
Fire Protection	EN1021 - 1	Cigarette	Passed

1. The Easy Clean technology allows the removal of even tough stains without the need for chemical cleaning agents, simply use water. Stains such as Ketchup, coffee and ink can easily be removed.
2. With consistent use, fabrics may present with pilling caused by friction due to regular use. Pilling is loose fibers collecting on the surface of the fabric and will stop once they are all removed over time. It can easily be cleaned with a pill shaver or pill comb. Pilling is normal and does not lower the quality or durability of the fabric and it is not considered a claim.
3. Pulled threads are to be expected if fabric is caught on sharp objects.



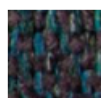
**Natur**  
IC - 02



**Etno Red**  
IC - 59



**Marmo**  
IC - 69



**Deep Blue**  
IC - 79



EASY  
CLEAN



ECO  
FRIENDLY



MULTICOLOR  
EFFECT

## Care labeling:

Washing

gentle cycle



Chlorination



Ironing

low heat on the back side



Chemical Cleaning



Drying



Spin



Dry in shade



1. FEYDOM does not accept responsibility for any damage resulting from inappropriate material use or cleaning.
2. Test results were gathered from various samples and therefore represent avercacturing process.
3. Slight variations in color shades are possible and unavoidable due to the fabric manufacturing process.
4. Our products satisfy the European Chemicals Directive (EG) no.1907/2006 (REACH) appendix XVII.

## Cleaning Instruction:

### What can be used:

- Soft brush or vacuum with soft-brush attachment,
- Natural soap or any dishwashing liquid,
- Slightly wet clean towel or natural sponge (avoid colored towels/sponges),
- Lukewarm water,
- Moist napkins or baby wipes.

### What must not be used:

- NEVER use nail polish remover, or anything containing acetone,
- NEVER use any product that contains bleach or a bleach alternative because it may cause discoloration,
- NEVER use carpet cleaning machines or attachments, because it may cause the fabric to shrink or wrinkle,
- NEVER dry with hair dryer set on maximum hot position,
- NEVER use fabric softeners.



### REACH Compliance Certificate

The EU REACH Regulation (Registration, Evaluation and Authorization of Chemical Substances - EC1907/2006) REACH is a regulation of the European Union, adopted to improve the protection of human health and the environment from the risks that can be posed by chemicals, while enhancing the competitiveness of the EU chemicals industry. It also promotes alternative methods for the hazard assessment of substances in order to reduce the number of tests on animals.